

(Financial Bid)

**SPECIFICATIONS / BRANDS / MAKE OF ITEMS TO BE
USED FOR THE FURNISHING OF PUNJAB & SIND BANK AT
ANANDPUR SAHIB**

SPECIFICATIONS/BRAND NAMES OF CIVIL AND FURNISHING MATERIALS AND FINISHES

In case it is established that the brands specified below are not available in the market are subject to the approval of the alternative brand by the Architect

S. NO.	ITEM	COMPANY MAKE
1	REINFORCEMENT STEEL	TATA, SAIL, JINDAL, RATHI KAMDHENU
2	AAC BLOCK	BILT, MAGNA, ULTATECH OR LOCAL AVAILABLE
3	CEMENT	ORDINARY PORTLAND CEMENT 43 GRADE MANUFACTURED BY ACC/BINANI/JAYPEE/ ULTRA TECH/AMBUJA
4	POLYSULPHIDE SEALANT	PIDISEAL BY M/S PIDILITE INDUSTRIES LTD., FOSROC, SHALIMAR, ROFF
5	WATER PROOFING COMPOUND	CICO , FOSROC, DR FIXIT, ROFF
6	SHUTTERING PLYWOOD	GREEN, CENTURY, ARCHID
7	TOUGHENED GLASS	TRUTUFF OR EQUIVALENT
8	GLASS/LACQUERED GLASS	MODI FLOAT. ST. GOBAIN., ASAHI
9	WIRED GLASS	6MM THK. WIRED GLASS MANUFACTURED BY HINDUSTAN SAFETY GLASS WORKS LTD. CALCUTTA, OR VALLABH GLASSWORKS GUJRAT./HARYANA SHEET GLASS.
10	WHITE CEMENT	J.K. WHITE CEMENT , BIRLA WHITE CEMENT
11	DISTEMPER, PAINT	ENAMEL, PLASTIC EMULSION MANUFACTURED BY BERGER PAINTS, ASIAN PAINTS, NEROLAC , SHALIMAR PAINT, ICI.
12	PLASTER OF PARIS	SHRIRAM, SAKARNI, BIRLA,J.K
13	PUTTY	ASIAN PAINTS., JK, BIRLA
14	EXPANSION BOLTS FOR FIXING	DASH FASTENERS OF APPROPRIATE SIZE BY HILTI OR EQUIVALENT
15	WINDOW HARDWARE	HETTICH, KAFF, EBCO OR HAFFLE
16	CERAMIC TILES	JOHNSON,SOMANY,KAJARIA, VARMORA,
17	VINYL FLOOR	ARMSTRONG/ RIKVIN , WONDER FLOOR.
18	VITRIFIED TILES	JOHNSON, SOMANY, KAJARIA , VARMORA , SIMPOLO(WHITE BASE)
19	GLAZED TILES	JOHNSON , SOMANY, KAJARIA , VARMORA
20	SPECIAL CERAMIC TILES	SARASWATI CERAMICS, OTHER APPROVED POTTERY IN DELHI / KHURJA
21	HINGES AND DRAWER SLIDE, KEYBOARD	KAFF, HETTICH, OZONE, HAFFLE, EBCO
22	LOCKS, HANDLES	GODREJ, DORSET, DORMA, ASPA
23	DOOR CLOSERS, FLOOR SPRING, DOORSTOPPER AND HARDWARE FITTING	DORMA, DORSET, OZONE, GODREJ
24	ALUM, TOWER BOLTS, MAGNETIC CATCHER HARDWARE FITTING,	EBCO, EVERITE, SIGMA ,HETTICH, NIKON
25	MS SCREW	NETTLE FOLD, CALIBER, ARASNA, SUPERMAX
26	M.S. PIPES (RAILING)	JINDAL , APOLLO
27	FLUSH DOORS	DURO, CENTURY, GREENPLY, ARCHID
28	veneer	DURO, CENTURY, GREEN
29	LAMINATE	GREENLAM, CENTURY, ARCHID
30	PLYWOOD, BLOCK BOARD ,	DURO, CENTURY, GREEN, ARCHID
31	STRUCTURAL STEEL	SAIL, TISCO, JINDAL.
32	TEXTURE TILES FOR FALSE CEILINGS / FIBER CEMENT BOARD	ARMSTRONG, EVEREST INDUSTRIES LTD.
33	WOOD	TEAK WOOD FIRST CLASS OF CP OR BURMA
34	M.S. ALUMINIUM LINEAL CEILING	INTERARCH, VISTA.

35	VENETIAL BLINDS	TRAC, VISTA, MAC, HUNTER DOUGLAS
36	GYPSBOARD CEILING	GYPSUM INDIA, LAFAARZ., ST. GOBAIN
37	HEAT REFLECTIVE FILM	GARWARE, 3M, SUNBIRD, WISDOM
38	ADHESIVE	FEVICOL SH, CENTURY, VEMICOL, JIVANJOR
39	TILE ADHESIVE	UNITILE, ROFF CHEMICALS, KAJARIA.
40	MIRROR	ATUL, JOLLY, MODI GUARD, ASAHI
41	G.I. PIPE AND FITTINGS	TATA, JINDAL, APOLLO, UNIK,
42	WASTE & VENT PIPE & FITTINGS	JAYASWAL NECO (NAGPUR), C.I.A.L. (DURGAPUR)
43	WOOD PRESERVATIVE	WOOD GUARD OR APPROVED EQ/ICI.
44	ALUMINIUM COMPOSITE SHEET	ALUCOBOND, ALSTONE, EUROBOND.
45	ALUMINIUM SECTIONS	JINDAL, INDAL, HINDALCO.
46	C.I./R.W.P.	NECO, RIF, IIS OR EQ.
47	C.P BRASS FITTING	JAGUAR, PARKO, PARRYWARE, GROHE, KOHLER
48	SANITARY WARE	HINDWARE, PARRYWARE, JAGUAR, GROHE, KOHLER
49	STAINLESS STEEL SINK	DIAMOND, NIRALI, JAYNA, NILKANTH,
50	SANITARY FITTINGS VISIBLE	JAGUAR, GROHE, KOHLER, PARRYWARE
51	PVC, U.P.V.C PIPE	SUPREME, PRINCE, ASTRAL, FINOLEX
52	CI BRASS LA PIPES	ELECTRO STEEL, KESORAM
53	STONE WARE PIPES	BHASKAR, ANAND,
54	R.C.C PIPES	ISI MARKED OF APPROVED QUALITY
55	LOFT TANK	SYNTAX, UNIPLAS, PLOYION
56	CI PIPES & WORK	NECO, RIF, SIF, BIS OR EQUIVALENT ISI MAKE
57	ANTI TERMITE	THIDDAN (35 E.C.), DURSABAN - 20 TC, TRISHUL
58	GATE VALVES	LEADER, ZOLOTO
59	PLASTIC W.C SEAT COVER	COMMANDER, DIPLOMAT
60	GUN METAL VALVE (FULL WAY CHECK & GLEBE VALVES)	LEADER, SANT, ZOLOTO
61	C.I VALVE (FULL WAY CHECK & GLEBE VALVES)	KIRLOSKAR, LEADER, ZOLOTO
61	C.I VALVE (FULL WAY CHECK & GLEBE VALVES)	KIRLOSKAR, LEADER, ZOLOTO
62	CPVC	PRINCE, ASTRAL, FINOLEX, SUPREME,
63	READY MIX CONCRETE	ACC, ULTRATECH, RMC INDIA, LAFARGE
64	THERMOFORMED	DUPONT, LG, AVONITE
65	CHAIRS/SOFA	
		GODREJ, METHODEX, FEATHERLITE, AFC, GEEKAY
i)	WAITING BENCH FOR RURAL/ SEMI URBAN- SS FRAMED SEAT AND BACK WITH SS FRAME AND BASE FINISHED	
ii)	SEATING OR SOFA SHALL BE WITH CUSHIONED BACK AND SEATS SHALL BE MADE IN LEATHER	

<u>LIST OF APPROVED MANUFACTURERS FOR DIFFERENT ELECTRICAL MATERIALS</u> (ALL MATERIALS SHALL BE ISI MARKED)		
S. NO.	ITEM	COMPANY MAKE
1	MEDIUM VOLTAGE SWITCHGEAR	
a	MOULDED CASE CIRCUIT BREAKER	SCHNEIDER / LEGRAND/ SIEMENS, L&T HAGGAR, HAVELLS (MCCB)
b	SWITCH FUSE UNIT	HAVELLS / L & T/ EE/ CROMPTON / H HELCON
c	HRC FUSE	HAVELLS/ L & T/ EE/ H HELCON
d	CHANGE OVER SWITCH	HAVELLS/ L & T, SEIMENS
2	VRF/VRV AC System	DAIKIN / O GENERAL / HITACHI

2(a)	Split AC	DAIKIN /O GENERAL / HITACHI (INVERTER AC)
3	CENTRIFUGAL FANS	KRUGER/NICOTRA/ GREEN HECK/AIR FLOW
4	INLINE FANS	KRUGER/NICOTRA/ GREEN HECK/AIR FLOW
5	G.I. Sheets	SAIL/ TATA/JINDAL
6	FACTOR FABRICATED DUCTING	ROLASTAR/ZECO/DUCTOFAB
7	WELDING ROADS	ADVANI/L&T
8	DUCT SUPPORTS	HILTI/ WALRAVEN/GRIPPLE
9	ANCHOR/ FASTENER	HILTI/FISHER/STERLING
10	ALUMINIUM TAPE	JOHNSON/BIRLA/ 3M
11	GRILLS/DIFFUSERS/FIRE DAMPERS	GLENSTORMS/SYSTEMAIR/RUSKINTITUS
12	INSULATION/ACOUSTIC LINING FOR DUCTING	ARMACELL / UROBATEX /VIDOFLEX
13	INSULATION FOR REFRIGERENT FOR PIPE	ARMACELL / UROBATEX /VIDOFLEX
14	COPPER REFRIGENT PIPE	RAJCO/MANDEV/MAHFLOW
15	UPVC DRAIN PIPE	SUPREME/ASTRALS/FINOLEX
16	CANVAS CONNECTION	MAPRO/GLENSTORMS/ASTAR
17	PROPELLER TYPE EXHAUST FAN	KRUGER/ HAVELLS/ MARATHAN/ORIENT/USHA/BAJAJ
18	MCB/ELCB/DBS/MCCB	SCHNEIDER / LEGRAND/ SIEMENS, ,L&T HAGGAR, HAVELLS
19	ACB	SCHNEIDER (MG-NS SERIES)/ SIEMENS (3WT)/ L&T (D-SINE)
21	MV CONTRACTORS/TIMER/ STARTERS	L&T/ SIEMENS/LEGRAND
22	PROTECTIVE RELAYS	L&T/ SIEMENS, ALSTOM, ABB
23	ALL METERS	ENERCON/NEPTUNE/ SIEMENS
24	AMMETER/VOLTMETER	A.E/ INDOTECH OR APPROVED EQUIVALENT
25	INDICATION LAMPS/PUSH BUTTON	L&T/ SCHNEIDER/VASHINO,CONCORD,SIEMENS
26	CAPACITOR	L&T/ SIEMENS/ NEPTUNE
27	TERMINAL BLOCKS	ELMEX/WAGO/CONNECT-WELL
28	CURRENT TRANSFORMER	AEP/ KAPPA/ INDITECH
29	SELECTOR SWITCH	KAYCEE/L&T/BCH/AREVA/ABB
30	BUS BAR	JINDAL/ INDALCO/ CENTURY
31	LT CABLES/CONTROL CABLE	SKYTON/ FINOLEX/POLYCAB /GLOSTER ALL FRLS
32	SWITCH SOCKET/METAL CLAD SOCKET	LEGRAND (MYRIUS) , / ANCHOR ROMA , HAVELLS (CRABTREE)
33	CABLE TRAY	PILCO/ NEEDO, SLOTCO, VENUS,ERA CONTROL SYSTEM
34	HUNGS	DOWELS
35	CONNECTORS	ELMEC/DELICITY/WAYTEK
36	CABLE GLAND	STRIPWELL/ COMMET/ SIEMENS,GROMMET,POWER ENGG.
37	MV PANEL (TTA)	SIEMENS CPAN/ ABB R2K/ SCHNEIDER BLOCKSET
38	GI CONDUIT	BEC/ AKG/ STEEL CRAFT
39	MOTORS	SIEMENS/ ABB/ CROMPTON
40	PVC PIPE	FINOLEX/ PRINCE/ SUPREME
41	ELECTRICAL PANEL	KRYPTON/RISHA/KEPL, ERA CONTROL SYSTEM /SPT
42	G.I PIPE	TATA/JINDAL/BHUSAN
43	EARTH LEAKAGE CIRCUIT	HAGER/ LEGRAND/ MERLIN GERIN
44	FIRE ALARM SYSTEM	SYSTEM SENSOR/ EDWARDS/APPOLO/AGNI
45	DATA COMPONENTS	AMP/ SYSTMATICS/LEGRAND
46	ACCESS CONTROL SYSTEM/ CCTV SYSTEM	BRIVO/HONEYWELL/DATS/LENEL/TYCO/SIEMENS
47	DOOR PHONE	PANASONIC/ZICOM/SOLUS(SECURE)
48	READER	BRIVO/HID
49	SMART PROXIMITY CARD	BRIVO/HID
50	CAPACITOR BANKS	L&T/ SIEMENS/ALSTOM
51	PVC INSULATED COPPER CONDUCTOR	FINOLEX/ POLYCAB FRLS/HAVELLS
52	CONTROL WIRES OF 1100 V GRADE	
	COPPER LUGS HEAVY DUTY	DOWELLS
53	MEASURING METERS	AUTOMATIC ELECTRIC/KAPPA/ENERCON
54	DIGITAL METERS & KWH METERS	SECURE/L&T/ENERCON

55	PUSH BUTTONS	L & T/SIEMEN/ABB
56	WIRING CABLE	FINOLEX / POLYCAB / HAVELLS/RR CABLES ALL FRLS
57	M.S. CONDUITS AND ASSESSORIES	BEC /AKG /ESC
58	P.V.C. CONDUITS AND ACCESSORIES	BEC/ AKG/POLYPACK/ESC ALL FRLS
59	LIGHT FIXTURES	PHILIPS/HAVELLS/SYSKA/WIPRO
60	FAN	USHA/CROMPTON/HAVELLS
61	ANY OTHER ITEMS	SAMPLE TO BE APPROVED BY BANK/ARCHITECT

CONTRACTOR

PUNJAB & SIND BANK

TENDER FOR THE FURNISHING OF PUNJAB & SIND BANK ANANDPUR SAHIB					
CIVIL WORKS & FURNISHING WORKS					
S No	DESCRIPTION	QTY	UNIT	RATE	AMT
1	Dismantling of existing branch partitions, tables counters, storage cabinets, false ceiling, electrical fittings fixtures, wiring switches boards d/b's, AC's, copper pipes etc. including disposal of malba.	1	Job		
2	Dismantling existing toilet, pantry, M.S. Jali shutters 3/4 Nos., kainchi gate, making window opening 2'x3' with all repairs in stationery room for cash cabin existing windows, entrance gate etc: for the construction of new entrance of the bank, new toilets, pantry ATM & UPS room shown as per plan.	1	Job		
3 i	Construction of 4.5" th. Brick walls with foundation 18"x18" (PCC 6" th. 13.5" & 9" wide brick steps) in Cem. Mortar 1:4 for ATM, pantry, UPS room, & both toilets.	700	Sqft.		
ii	Construction of 9" th. Brick walls to close windows openings	160	Sqft.		
4	Cement plastering 1:5 on new brick masonary walls.	1200	Sqft.		
5	P/F hard wood / M.S. white sheet chowkhats for toilets, Ups, Pantry rooms.	4	Nos		
6	P/F hard wood / M.S. white sheet ventilator frames of size 2'-6"x1'-6" with m.s. grills & 5mm thich glass.	3	Nos.		
7	P/F wooden flush doors 1.25" thick finished with 1mm th laminate on bith sides. With reqd hardwares.	4	Nos		
8	P/F Vitrified tiles 4'x2' on toilet walls & pantry walls.	420	Sqft.		
9	P/F Anti skid tiles of size 12"x12" / 16"x16" in toilets.	60	Sqft.		
10	P/F european W.C.'s of hindware/CERA of medium range with jet, seat cover & flush tanki complete.	2	Sets		
11	P/F wash basins 16"x22" of hindware/Cera of medium range with complete waste pipe fittings.	2	Nos		
12	P/F urinal of hindware/Cera of medium range with complete waste pipe fittings.	1	No.		
13	P/F 4" & 3" PVC pipes with reqd fittings such as bends, tees, and other fittings for sewerage	1	Job		

	disposal of both toilets & pantry upto the existing sewerage I.C's & G.T.s.				
14	P/F 1" & 3/4" cPVC pipes with reqd fittings such as bends, tees, nipples, stop corks, and other fittings for water supply to both toilets & pantry/water cooler pt from existing water tank / water supply lines.	1	Job		
15	Construction of pantry RCC slab as per plan 4'x2' wide, finished with pre polished granite top 19mm thick and front skirting on RCC slab, making moulding grinding polishing, S.S. Sink, with waste pipe fittings etc.	1	Job		
16	P/F S.S. Taps, conceals, angle cocks with PVC connections, s. s. caps nipples, floor trap jalis, towel rails, & (2 no Mirrors 18"x24" in both toilets) all items reqd in both toilets, pantry and water cooler pt.	1	Job		
17	P/F kainchi gate in front of bank's entry with M.S. grill above 7' ht.	1	Job		
18	P/F M.S. rolling shutters for ATM & Br entry.	2	Job		
19	P/F Premium quality vitrified tile flooring with cement mortar/recommended chemical at base as per flooring pattern & colour scheme (with as much as required base filling (for leveling) of cem. conc. 1 : 3 : 6 for leveling with) of size 2'x2' of Naveen/Marbonite/Johnson/Kazaria of approved colours	980	Sqft.		
20	Construction Of RCC slab 5" that 8'-0" ht in stationery Room Approx 60 Sqft complete with shuttering etc. complete. RCCB 2 Nos.16mm dia tor steel 8 nos, Rings 8 mm dia @ 5" C/C, Slab steel 10 dia tor @ 5" C/C in both directions.	1	Job		
21	P/F M.S. ladder with side railing, M.S. Ladder shall be made of 1"x2" M.S. pipes	1	Job		
22	P/F M.s. Railing 7'-6" long & 3'-0" high on RCC slab.	1	Job		
23i	Providing & Fixing false ceiling at 9'-0" ht. (as per drg.) of India Gypsum Ltd. (GMFSC-4.1) using 12.5mm thick Gypboard, paper tape, jointing compound, G.I. Sections marked "Gypsteel" to be placed at 4'-0" C/C in one direction and at 1'-6" C/C in other direction. The false ceiling shall be finished properly after cutting / making holes for fixing light fixtures including three coats of oil bound distemper paint etc. complete as per drgs.	650	Sqft.		
ii	Making Cove in Gyp false ceiling.	130	Rft.		
24	PPGI METAL SHEET FALSE CEILING: Providing & fixing in position false ceiling in Armstrong 600 x 600 mm PPGI Metal microlook lay-in standard perforated tiles silhouette 38 made of 120 gsm pre-painted galvanised iron, Grade-GPL as per IS277 (2018) with coating durability as per IS 4246 color as approved by Bank/architect with 15mm exposed grid system (Grid frame shall have black groove at bottom) by Armstrong Co. with suspenders. Making necessary framework for A.C. ducting, if any, and necessary cutouts for diffusers and light fittings, taping and finishing to proper line & level, including making grooves and trap doors for A.C unit	430	Sqft.		
25	TOUGHENED GLASS DOORS, FIXED GLASS & PARTITION: Providing & fixing 12 MM thick toughened glass for door with complete patch fittings such as floor spring, handles, lock and L-brackets etc. The job shall also include etching design of PSB logo on glass.	170	Sqft.		

26	Providing & fixing Aluminum partitions / fixed glass window (powder coated of size 3 1/4" x 1 1/2" x 2mm bottom section 4 1/2" x 1 3/4" x 2mm th. with 5mm th. glass.	70	Sqft.		
27	Providing and fixing wooden partition made of internal frame of alum sections of size 1.75"x1.75" placed at 2'-0" c/c vertically and horizontally finished with 9mm thick commercial ply / Bison board on both sides with 1.00 mm thick laminate on both sides with horizontal grooves. These partitions shall have 5.00 mm thick glass (etching as per design) above 2'-6" ht. or 4'-0" ht with beading 1/2"x1 1/2" . The rate of partition shall include providing & fixing wooden door finished with laminate on both sides and partly glass, but with complete hardware required such as latches, stopper. The low ht. partition shall have rubber-wood / teak-wood gola of size 3" x 3/4" which shall be polished as per shade reqd.				
(i)	Low ht. partitions with 12 mm thick glass.	80	Sqft.		
(ii)	Full ht glazed partition with 5mm th glass.	200	Sqft.		
(iii)	a) Cash-Cabin's pts (7'-3" high)	60	Sqft.		
(iv)	b) Cash cabins' as well as single windows' front ptn. with 12mm th. Glass.	20	Sqft.		
(v)	Rear & Strong room partition for banking hall.	80	Sqft.		
(vi)	Cost Mortice locks (with handles)	3	No		
(vii)	Cost of Multipurpose locks for storages, drawers etc.	30	No		
(viii)	Cost door closers.	4	No		
(ix)	Cost floor springs.	0	No		
(x)	Cost of Knight Latches	1	No		
(xi)	Aluminum grill.	0	Sqft.		
28(i)	P/F wall paneling on alum section frame 1" x 2" placed @ 2'-0" c/c horizontally & vertically @ 1'-0" C/C, finished with 9mm thick commercial ply / Bison board by making horizontal grooves of size 3/8"x3/8", 1.00 mm thick laminate as per design, the paneling shall be closed with 2" x 1" rubber wood beading	600	Sqft.		
(ii)	Pin-up board finished with cotton cloth & rubber wood beading.	40	Sqft.		
29(i)	<u>Banking Counters with 1 1/2" thick post-form factory made Tops:</u> Providing & fixing Banking Counters (SW) as per design, 2'-6" ht. & 3'-3" ht. (2 heights). The banking counters shall have the provision to adjust the key board, drawer, storage complete shelf for CPU at bottom and foot rest. The banking counters shall be made of 19mm thick commercial board, with rubber -wood Gola of size 1 1/2 "x 3/4 " , which is to be polished as per color scheme. The counter shall be finished with 1mm thick laminate of approved shade / colour, handles, magnet catchers, hinges. Inside of counters shall be painted with synthetic enamel paint as per color scheme	4	Rft.		
30	<u>Tables with 1 1/2" thick post-form factory made Tops:</u> Providing & fixing office tables with/without drawer and storage below of size 2'-6" (wide), 2'-6" (high) with the provision of key board, with sliding channels of Ebco, complete shelf for CPU at bottom and foot rest. The table shall be made of 19mm thick commercial board; 1mm thick laminate with rubber -wood gola of size 1 1/2" x 3/4 " polish, painting inside only, side golas etc., with hardware such as hinges, catchers and handles.	20	Rft.		

31	Side Rack with 1½" thick post-form factory made Tops: Providing and fixing side rack, 2'-3" ht. as per design. These racks shall have two drawers with storage below and be made of 19mm thick commercial board; 1mm thick laminate with rubber -wood gola of size 1 ½" x ¾" polish, painting inside only, side golas, handles, catchers, hinges etc.	6	Rft.		
32	Storage with 1½" thick post-form factory made Tops: Providing & fixing storage along wall 1'-6" deep made of 19 mm th. Comm. Board & 1 mm th. laminate, polish, inside painting, complete finished with golas/margins, handles, hinges and catchers, front openable shutters, as per requirements / design / drg.	280	Sqft.		
33	Cash Counters with 1½" thick post-form factory made Tops: Providing & Fixing Cash – counters 2'-9" wide, with two levels i.e. 2'-6" & 4'-0" ht. The lower portions top & all other exposed surface shall have 1mm thick laminate and golas/margins. The lower portion on cashier side there will be provision of 3 nos. drawers with sliding channels of Ebco. for cash, stationery, key board, etc. Inside of cash counters shall be painted with synthetic enamel paint as per color scheme, rubber -wood beadings / gola etc.	5	Rft.		
34	Manager Table with 1½" thick post-form factory made Tops: Providing & fixing Branch Manager table 2'-6" ht. with rubber-wood Gola of size 1 ½" x ¾". as per drgs. having drawer/s, storage cabinet, key board, with sliding channels of Ebco, foot rest, space for CPU & Monitor, all as per drg. / design, the table shall be made with 19mm thick com. Board finished with 1 mm thick laminate Inside of table shall be painted with synthetic paint, the other hardware, such as handles, catchers, hinges etc. shall be provided as per requirement.	5	Rft.		
35	Providing & fixing writing stand of size 3'-0" x 1'-0" x 1'-7 ½" high (face area) as per design drg. Made of 19mm th. Com. Board, 1 mm th. Laminate with rubber wood lipping etc.	3	Rft.		
36(i)	Providing & fixing notice board of size 2'-6"x 4'-0" finished with ivory colour 1mm th. laminate, 1"x1" th. rubber wood beading on all sides.	1	No		
(ii)	Providing & fixing soft boards of size 3'-6"x 2'-0" (covered with openable glass shutters) on 10mm th. comm. ply 12mm th. soft board finished with cotton fabric , 1"x2" rubber wood beading.	1	No		
37	Providing & Fixing cheque drop box and complaint box of size 18" x 27" as per detail.	2	No		
38	Painting work on walls & cemented ceiling (inside and outside of whole premises) with oil bound distemper paint, snowcem and enamel paint on shutters, kanchi gate and grills.	JOB	Sqft.		
	TOTAL				
	ELECTRICAL WORKS				
1	Providing & Fixing 2' x 2' recessed mounted LED Aura I - LCPL-36-CDL(2X2) of Crompton.	10	No		
2(i)	Providing & Fixing 15 W LED ROUND DOWNLIGHTER LCND-15-CDL of Crompton.	20	No		
(ii)	Providing & fixing LED tube lights 1x20W of Philips.	10	No		
3(i)	Providing & Fixing wall fans: Khaitan / Crompton Greaves / Orient.	7	No		

(ii)	Exhaust Fans 12" Dia : 1400 rpm (Double ball bearing) Heavy duty Crompton Greaves / Phillips.	3	No		
(iii)	Providing & Fixing ceiling fans: Khaitan / Crompton Greaves / Orient 4' dia.	0	No		
(iv)	Cost of modular regulators of Havells / Anchor ROMA makes.	0	No		
4	ELECTRICAL POINTS : Providing laying, fixing & testing of electrical points including wiring from MCB's to switches, plate type switches, socket & M.S. Modular boxes with rust proof treatment size to accommodate the required nos. of switches & sockets plus circuit wiring from switches to lights/fans/fixtures etc. wherever required complete with earthing 1.00 mm ² multi strand wire in 25mm dia. Unbreakable PVC conduit ISI marked with specials under floor / wall & above false ceiling or making truff under / along work – stations including chase cutting, disposal of melba away from the site and repair of the same with cement mortar, copper conductor wires only will be used of approved make.				
a)	<u>Electrical wiring for Air-Conditioning:</u> P / F 32 Amp wiring with MCB from D/B to site of outdoor and indoor A/C Unit, i.e. circuit wiring with 4mm sq. multi-strand PVC copper wire, earth wire with DP switches.	4	No		
b)	Electrical wiring for UPS (charging point for UPS): P / F 2 runs of 4mm sq. and one run of 1.5 sq. mm as earth wire multi-strand PVC copper wires from D/B to the location of UPS room for input to UPS in PVC pipe with 2 no DP's and 2 nos 15 Amp. Power plugs.	2	NO		
c)	15 Amp wiring with 2.5mm sq. multi strand PVC copper wire & metal clad enclosure sockets & plus.	10	No		
d)	5 Amp plug point wiring with 1.5mm sq. multi stand PVC copper wire inc. Plate switches, sockets, plugs. Etc.	8	No		
e)	Call-bell point wiring including Ding-dong bell with 1.5mm sq. multi strand PVC copper wire including plate switches, sockets, etc.	1	No		
f)	Wall Fan points with 3-pin socket and switch, lights & exhaust fan point wiring with 1.5mm sq. from D/B to switches & fittings multi strand PVC copper wire including plate switches, sockets, etc. (For payment no. of switches shall be counted).	50	No		
g)	Signage wiring (material & labour) – P&F of 3x4mm & copper flexible wire & PVC conduiting of ISI make complete with all accessories like Saddles, bends modular switches etc.	2	No		
5	UPS POINTS: P/L & testing electrical three point wiring /circuit wiring having individual circuits for computers with 2.5mm ² Multi-strand copper PVC wire in unbreakable PVC conduits 25mm dia wall thickness 2mm thick with specials under floor / wall & above false ceiling including chase cutting, disposal of malba away from the site and repair of the same with cement mortar, incl. Switches & socket M.S. switch boxes with rust proof treatment size to accommodate the required nos. of Modular switches, sockets etc. & plate type sockets with indicator three in one plate including earthing with 1.00 mm ² multi strand wire complete in all respect.				

(i)	Set of 6 amp. 4 sockets & 4 switches	11	SET		
6	GEL TYPE CHEMICAL EARTHING (Distance between each pit shall be min 1.5meter) Supplying and installation of copper Gel Earthing station having length 3000 mm including bore-well, chamber with cover and all required civil allied works each earth pit to filled with 2 bags in 30 Kg pack of "Black-Fill Compound" (BFC) EARTHING CONDUCTORS: Wiring with 1x10 sqmm PVC insulated copper conductor wire of 650/1100 volts grade (Finolex make flame guard quality) as earth wire with concealed/exposed PVC pipe including making all the connections.	2	No		
7	Providing and fixing of PVC conduit in wall floor including Telephone wire, M.S. box and two pin telephone sockets or R.J. – 11 plates out let incl. Testing and commissioning etc. as required.	5	No		
8(i)	Providing, laying, testing and commissioning CAT-VI/ Lucent / D-link computer networking cable in PVC conduit in floor or wall from server room to each table with I.O.'s (Socket)	10	No		
(ii)	Supplying of patch chords for computers 1m & 2m length.	14	No		
9	Elect D/B with all internal connections for electrical and generator connections with 10 sq.mm multi strand copper wire, which shall include the following items.				
(i)	Amp Meter and voltmeter set	1	SET		
(ii)	Kit-kats 100 Amp.	3	No		
(iii)	Neutral link.	1	No		
(iv)	Aluminum bus bar 100 Amp proper tinned.	1	No		
(v)	100 Amp. Main switch MCCB type.	1	No		
(vi)	Change –over 100 Amp. 3-Phase of Havells make.	1	No		
(vii)	Providing and fixing different rated MCB,s DP's, for lights, fans, and power supply of Havells make.	36	No		
(viii)	Providing and fixing TPN (tripping type) of 100 Amp of Havells make. (one for lights and one for power supply)	2	No		
ix	Making double-door powder coated M.S. Distribution board 3'x4' to accommodate the above noted electrical items.	12	Sqft		
x	P/F 3 phase 6-way D/B (Quote the cost of Box only)	2	nos		
	<u>UPS SUPPLY</u>				
xi	Providing and fixing (MCB type) DP of 63 Amp of Havells make for UPS supply.	6	No		
xii	Providing and fixing different rated MCB,s for UPS supply of Havells make.	18	No		
xiii	P/F single phase 1 nos 12-way & 1 no. 6-way D/Bs (Quote the cost of Box only) for UPS supply for MCB's.	2	No		
10(i)	Providing & fixing main electrical cable 4- core al. cable armored from elect. pole to meter 35mm dia.	20	Mtr		
(ii)	P/F generator wire/cable 16mm 4-core Alum. Cable armoured.	20	Mtr		
(iii)	P/F 16mm 4-core Alum. Cable from bus-bar to ATM, main panel to raw power DB and generator DB	3	Mtr		
11	Making double-door wooden laminated electrical almirah 3'x8' to accommodate the above noted electrical items.	0	Sqft		
12	Connectivity for the VSAT / leaselines (material & labour) – P&F of 40mm PVC conduit of ISI make including data cable of D-link & RJ-45, complete for connectivity.	2	No		

13	Providing, fixing, testing and commissioning computers 24-Ports networking switch & patch panel including rack.	1	No		
14(i)	P/L copper pipe with complete insulation required for 1.5 ton split type A.C.s from the place of external units upto the location of inside units.	200	Rft		
(ii)	Providing and laying 25mm dia. PVC pipe heavy duty Diplast make for drainage of water of inside units.	110	Rft		
15	Removal, re-fixing, servicing, testing, commissioning of existing AC's with filling of A/C gas, making the A/C's fully operational.	0	Nos		
	TOTAL				
	ATM (FURNISHING WORKS)				
1	Providing & Fixing false ceiling at 9'-0" ht. (as per drg.) of India Gypsum Ltd. (GMFSC-4.1) using 12.5mm thick Gypboard, paper tape, jointing compound, G.I. Sections marked "Gypsteel" to be placed at 4'-0" C/C in one direction and at 1'-6" C/C in other direction. The false ceiling shall be finished properly after cutting / making holes for fixing light fixtures including three coats of oil bound distemper paint etc. complete as per drgs.	60	Sqft		
2	TOUGHENED GLASS DOORS, FIXED GLASS & PARTITION: Providing & fixing 12 MM thick toughened glass for door and fixed glazing, with complete patch fittings such as floor spring, handles, lock and L-brackets etc. The job shall also include etching design.	50	Sqft		
2(i)	ACP partition and door with ACP sheet on bothsides.	0	Sqft		
3	Black granite slab – P&F black granite slab 18-20 mm thick fixed to entrance door steps with grinding, moulding and polishing.	40	Sqft		
4	Providing & fixing in position Aluminium Composite Paneling, rolling shutter box (ACP) with framing of Aluminium Tube sections of min 1.5" x 1" and 18 gauge 2'-0" C/C both ways. ACP to be in 2' width panels or distributed equally. Panels to be fixed to the frame with 3M or equivalent adhesive. Joints to be finished with Silicon based sealant (Black colour). ACP thickness of 3mm minimum. Aluminium foil thickness to be min 0.20 mm on both sides. Alstrong, ALEX, Alstone, Alcobond, prime bond or equivalent ISO certified or approved brands to be used. Shades to be as per bank's approval. It has to be used for cladding, boxing over main door and both side Jam of main door and fixed glazing. Complete panelling should be of ACP.	150	Sqft		
5	P/F wall paneling inside of ATM with base frame of alum sections 1.5" x 1" and 18 gauge 2'-0" C/C both ways, finished with 9mm th bison board 1mm th yellow color laminate. Finally, the paneling shall be finished with 9mm thick MDF board having CNC cutting of star-type design as per "Model Branch Pattern of PSB Bank", which shall be painted with Duco paint before fixing it on yellow colored laminate. The yellow colored laminate will be visible from CNC cutting/openings. Near ceiling green color Y yellow color borders shall be made as per color scheme.	220	Sqft		
6	Grouting of ATM Machines with Anchor fastener as per Bank's rules, (Including the cost of RCC 12" slab.	0	NO		
7	Providing & Fixing Flooring with vitrified tiles joint – free of minimum 9 mm thickness , size 24" X	0	Sqft		

	24" , 4 " Skirting , all fixed in 1:5 cement mortar, complete with cutting and filling joints with white cement. Make of tiles Johnson/bell/euro/asian /nitco/naveen/somani or equivalent. Ivory / shade or as specified by the bank.				
8	P/F cheque drop box-cum-writing top having 12mm th glass top.	1	NO		
9	P/F acrylic notice board of size 2'x3' with chrome spacers.	1	NO		
10	Providing and supplying plastic dust bin and chair.	1	Set		
11	P/F Aircon louvers powder coated of size 12" long.	2	Sqft		
	TOTAL				
	ELECTRICAL WORKS FOR ATM:				
12	Signage & AC wiring : P&F of 3x4mm & copper flexible wire & PVC conduiting of ISI make, bends etc.	3	NO		
13	Connectivity from server/dish Antenna: P&F of 40mm PVC conduit of ISI make including data cable of D-link (Cat-VI) & RJ-45, complete for connectivity. (to be concealed with openable and lockable box)	4	NO		
14 i	Providing & Fixing 6" x 2' recessed mounted LEDs	2	NO		
ii	P/F profile light of yellow color in ceiling.	20	Rft		
15	Providing & Fixing 15 W LED ROUND DOWNLIGHTER LCND-5-CDL of Crompton.	6	NO		
16	Providing & fixing ordinary tube lights 1x40W of Philips.	0	NO		
17	GEL TYPE CHEMICAL EARTHING (Distance between each pit shall be min 1.5meter) Supplying and installation of copper Gel Earthing station having length 3000 mm including bore-well, chamber with cover and all required civil allied works each earth pit to filled with 2 bags in 30 Kg pack of "Black-Fill Compound" (BFC) EARTHING CONDUCTORS: Wiring with 1x10 sqmm PVC insulated copper conductor wire of 650/1100 volts grade (Finolex make flame guard quality) as earth wire with concealed/exposed PVC pipe including making all the connections.	0	NO		
18	Lights point wiring from UPS (2 lights points and one access lock wiring) and rest shall be connected with raw power supply with 1.5mm sq. from D/B to switches & fittings multi strand PVC copper wire including plate switches, sockets, etc. (For payment no. of switches shall be counted).	7	NO		
19	Electrical wiring for UPS input-output: P / F 32 Amp wiring with with 2 DP's of 32 Amp. from D/B to the location of UPS/UPS room for input and output power supply with 2 runs of 4mm sq. and one run of 1.5 sq. mm as earth wire multi-strand PVC copper wires, with DP switches / power pt. i.e. switch-socket.	1	NO		
20	P/L & testing electrical three point wiring having individual circuits for computers with 2.5mm ² Multi-strand copper PVC wire in unbreakable PVC conduits 25mm dia wall thickness 2mm thick with specials under floor / wall & above false ceiling including chase cutting, disposal of melba away from the site and repair of the same with cement mortar, incl. Switches & socket M.S. switch boxes with rust proof treatment size to accommodate the required nos. of Modular switches, sockets etc. & plate type sockets with indicator three in one plate including earthing with 1.00 mm ² multi strand wire complete in all respect.	2	SETS		

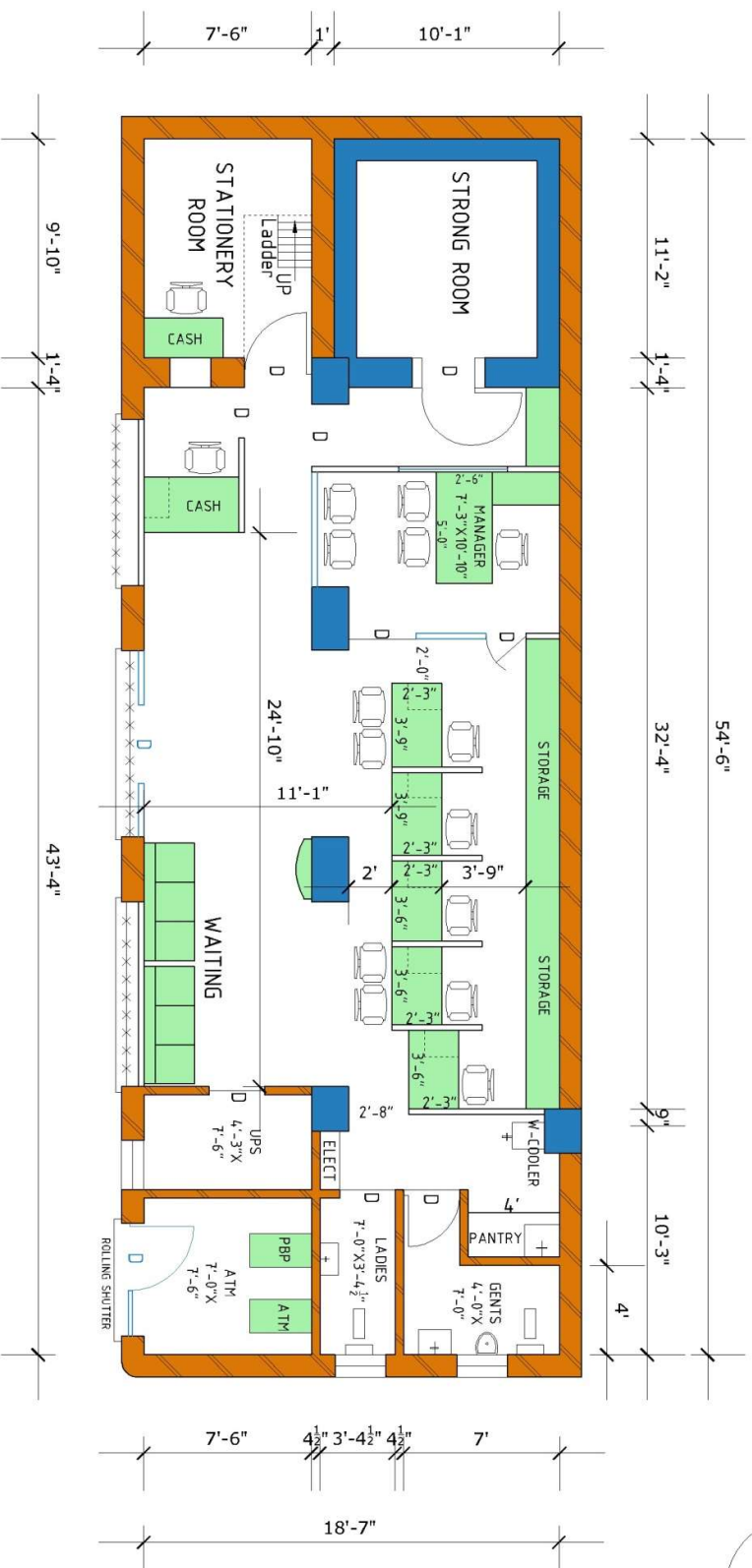
	Set of 6 amp./16 1 socket & 1 switch (to be concealed with openable and lockable box)				
21	15 Amp wiring with 2.5mm sq. multi strand PVC copper wire & metal clad enclosure sockets & plus.	1	No		
22	5 Amp plug point wiring with 1.5mm sq. multi stand PVC copper wire inc. Plate switches, sockets, plugs. Etc.	1	NO		
23	P/L copper pipe with complete insulation required for 1.5 ton split type A.C.s from the place of external units upto the location of inside units.	30	Rft		
24	Providing and laying 25mm dia. PVC pipe heavy duty Diplast make for drainage of water of inside units.	30	Rft		
25	Supplying, erection and commissioning of timer switch 240-volt single phase for AC & Glow sign Board	2	No		
26	4-way 3- phase D/B of Havells make with 6 nos 6-10 amp MCB's, 3 Nos DP's 16/32 amp and 1 No TPN 32 amp for Raw power & UPS supply.	1	No		
	TOTAL				
	FURNISHING WORKS OF BRANCH				
	ELECTRICAL WORKS OF BRANCH				
	FURNISHING WORKS OF ATM				
	ELECTRICAL WORKS OF ATM				
	TOTAL				
	QUOTE DISCOUNT, IF ANY				
	GRAND TOTAL				
	GST 18%				
	TOTAL				

CONTRACTOR

PUNJAB & SIND BANK

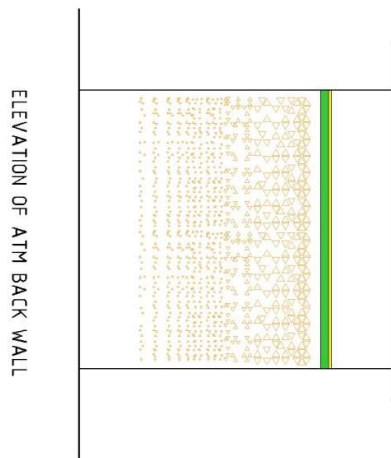
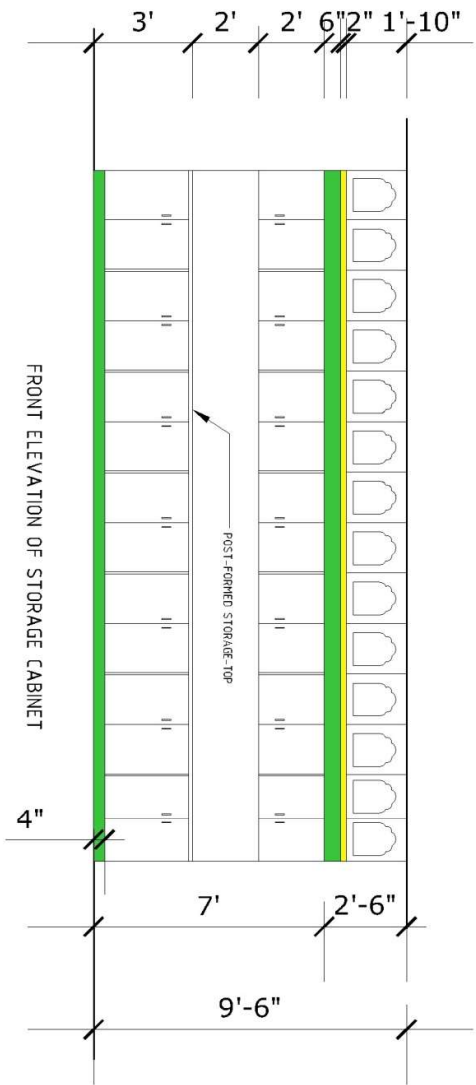
PUNJAB & SIND BANK AT ANANDPUR SAHIB

1a



PUNJAB & SIND
BANK AT
ANANDPUR SAHIB

GURDEV GROUP OF ARCHITECTS
Architects, Valuers, Planner, Interior & Ind. Designers
S.C.O. - 1094-95, 2nd Floor, Sector-22 B, Chandigarh
Ph.: 0172-5068450, Mobile: 9417008450



PUNJAB & SIND
BANK AT
ANANDPUR SAHIB

GURDEV GROUP OF ARCHITECTS
Architects, Valuers, Planner, Interior & Ind. Designers
S.C.O. - 1094-95, 2nd Floor, Sector-22 B, Chandigarh
Ph.: 0172-5068450, Mobile: 9417008450